



WHAT SEX IS YOUR FISH?

DESCRIPTION OF FEMALE AND MALE GONADS

WHAT IS THE SEX OF YOUR FISH?

YOU CAN DETERMINATE THE SEX OF YOUR FISH BY
INSPECTING ITS GONADS (REPRODUCTIVE ORGANS)

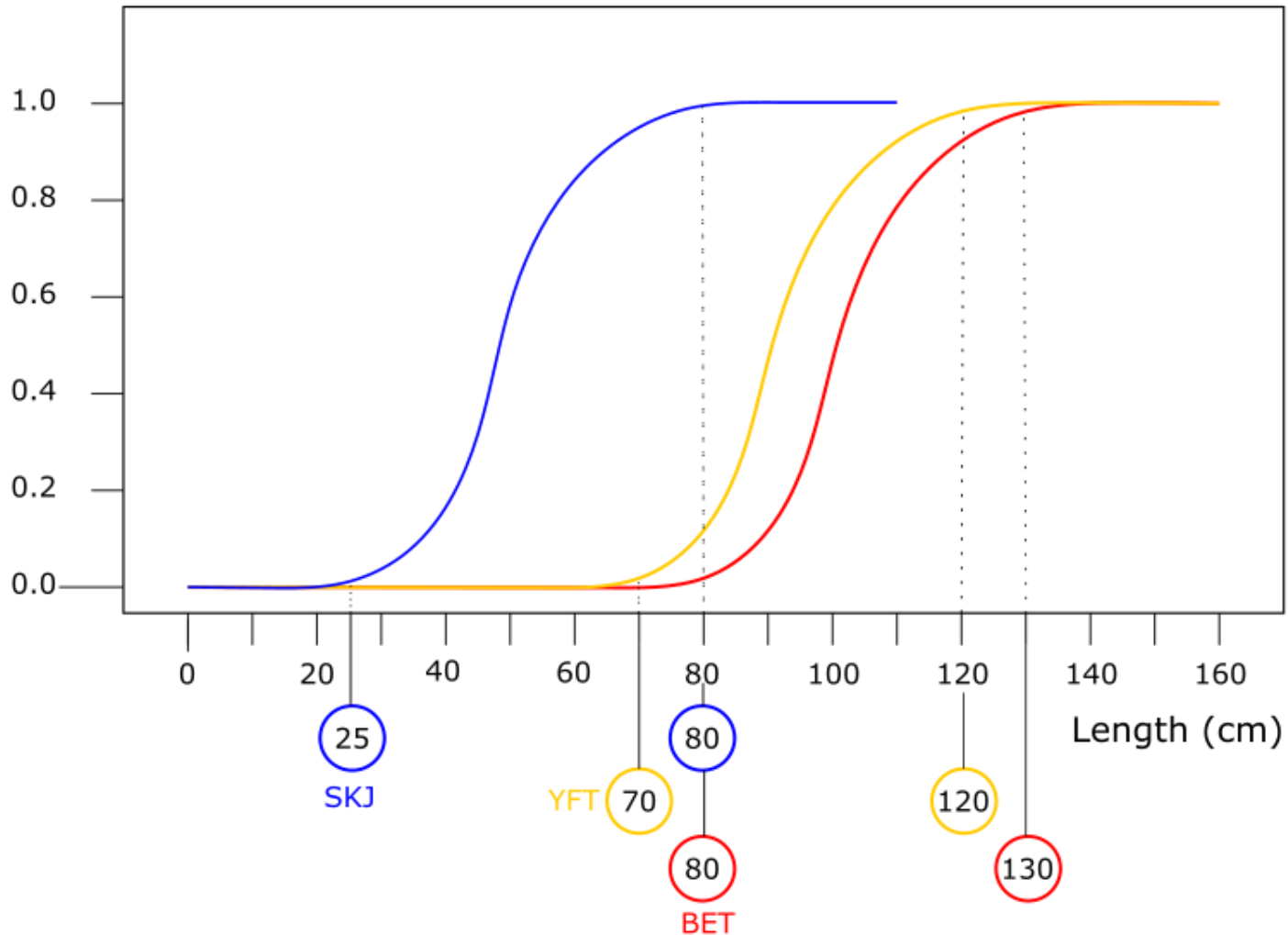


LOCATED TOWARDS THE TOP OF THE GUT CAVITY



IDENTIFICATION DEPENDING ON THE SIZE OF THE
FISH

LENGTH AT MATURITY FOR TUNA



- SKJ ~ 25 cm
- YFT ~ 70 cm
- BET ~ 80 cm

FEMALE GONADS

- Orangish
- Blood vessels
- Hollow
- Grainy
- Round



MALE GONADS

- White
- No Blood vessels
- Soft skin
- No hole in the middle
- Milky
- Flat



MALE GONADS

- Flat
- White in the middle



FEMALE GONADS

- Round
- Hollow



MALE GONADS

- Not always very Flat
- White in the middle



FEMALE GONADS

- Round
- Thick skin
- Not hollow
- No blood vessels





MALE GONADS

- White ribbon like

- Often with fat



FEMALE GONADS

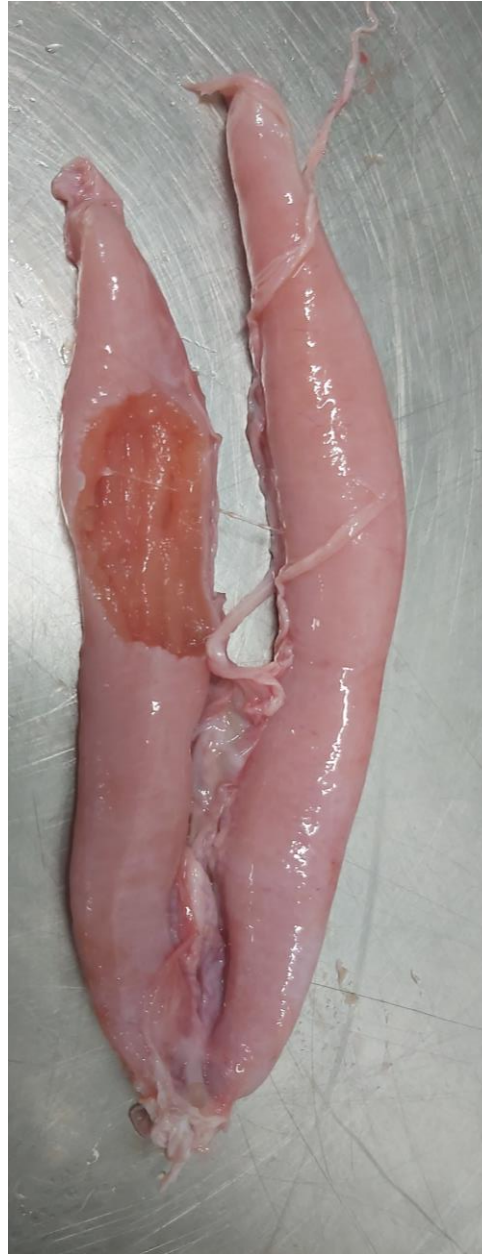
■ Reddish

■ Round



FEMALE GONADS

- Rounded
- Thick skin



IMMATURE FEMALE GONADS

- White Elongated
- But Hollowed



MALE GONADS

- Elongated and Flat
- Fat



MALE GONADS

- Parasites



MALE GONADS

- Elongated and Flat
- Sperm in middle
- Fat
- Old tuna?





SPAWNED FEMALE GONADS

- Wringled skin
- Empty